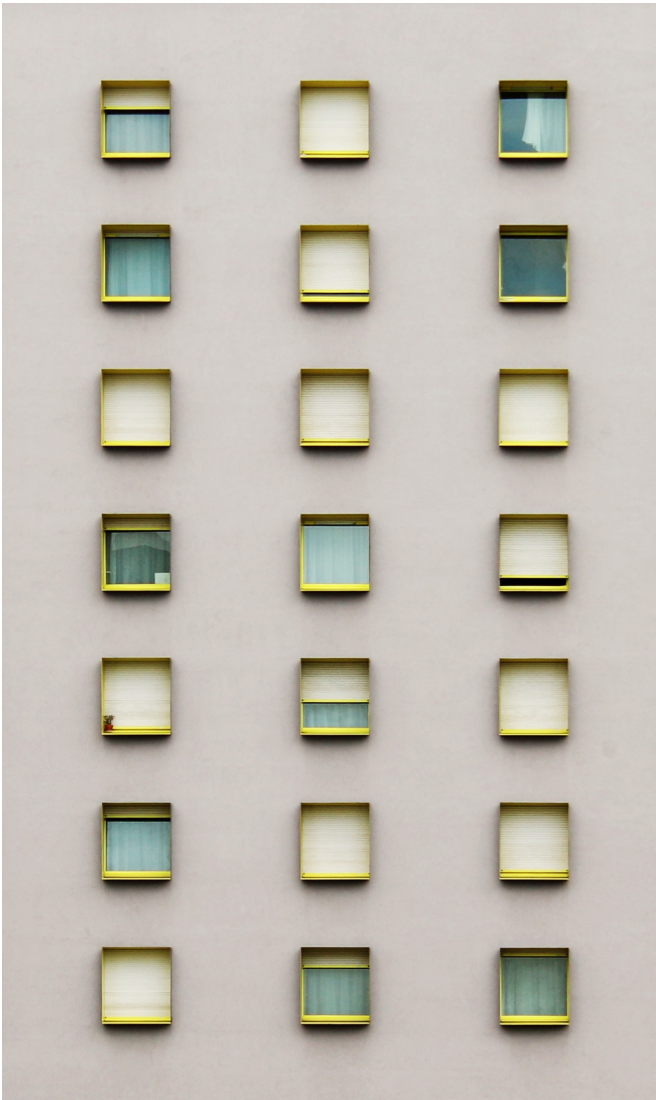

Continuity

Quick Reference Guides

Continuity Repositories

Use this guide to get started with creating and opening Continuity Repositories.



Introduction

Continuity Repositories

Continuity supports two types of model repository: **XML** repositories and SQL **Database** repositories.

- XML repositories are file-based and can be created on your computer's file system using Continuity's start screen.
- Database repositories are held within a conventional RDBMS database that you connect to from Continuity's start screen.

Database Repositories

Continuity supports three provides for database repositories:

- PostgreSQL,
- Microsoft SQL Server; and
- ODBC providers for database repositories.

If you do not yet have a Continuity database repository created, you can set one up one using the SQL Create Scripts for PostgreSQL and Microsoft SQL Server provided within the Continuity application .zip download packages available on the "Download" tab of the www.continuity.kiwi.nz website.

Database Connection Strings

To connect to a database repository, you will need to enter the database's connection string details into the Continuity start screen.

Here are some example connection strings to get you started:

PostgresSQL:

```
Host=localhost;Database=arcworx-repo;Username=username;Password=password
```

Microsoft SQL Server (example for Express Edition):

```
Server=localhost\SQLEXPRESS;Database=arcworx-repo;User ID=username;Password=password
```

ODBC (example is for Microsoft SQL Server Express):

```
Driver={SQL Server};Server=localhost\SQLEXPRESS;Database=arcworx-repo;Uid=username;Pwd=password
```

Security Credentials

If your database repository requires a username and password to connect, you can choose to add these into the connection string (as shown above) but they will be viewable and stored in plain text in the start screen's connection history.

To instead keep these details secret, the start screen allows you to submit a username and password through additional fields which are not stored in the connection string history.